

SOUTH AFRICA



AUSTERITY IN THE MIDST OF INEQUALITY THREATENS HUMAN RIGHTS

This factsheet examines the enjoyment of economic and social rights in South Africa, ahead of the country's first appearance before the UN Committee on Economic, Social and Cultural Rights in October 2018. Specifically, it uses indicators based on national and international data sources to explore whether the South African government is fulfilling its obligations under Article 2(1) of the International Covenant on Economic, Social and Cultural Rights to take steps to progressively realise these rights using the "maximum of its available resources."

Post-apartheid South Africa provides a striking case study of the intersection between economic inequality, social exclusion and human rights deprivations. Despite the more inclusive agenda initiated in 1994, which included the adoption of some of the strongest constitutional protections for economic and social rights in the world, enjoyment of these rights remains elusive for the majority of people. Systemic inequality continues to be ingrained in the country's economic and social structures, resulting in the world's highest levels of income and wealth inequality. Poverty and unemployment are experienced by a large percentage of society and intersect with disparities in access to quality health care, education, housing and even food. Corruption thrives under such conditions of inequality. It diminishes available resources and erodes trust in public administration and private enterprise alike. These inequalities undermine opportunities for political participation and accountability.

Compounding these challenges is the fact that the South African government has adopted a policy of fiscal austerity in recent years. Austerity is being imposed in response to rising but moderate public debt, pressure from credit rating agencies and lower-than-expected GDP growth and revenue collection. These negative trends occur in a context of lower prices for South Africa's mineral exports, widespread corruption and "state capture" during the Jacob Zuma administration, as well as the mismanagement of critical state-owned enterprises. Austerity has taken the form of cuts in government expenditures and regressive tax changes, which present a growing threat to the achievement of

social justice that is at the heart of the South African Constitution.

This factsheet focuses particularly on inadequate and inefficient resourcing for the rights to health (Article 12) and education (Article 13). Health expenditure per uninsured person has declined in recent years. Due to limits on personnel expenditure, most provinces are suffering from chronic staff shortages. This is resulting in an overall reduction in the quality of public healthcare. Real education spending per pupil has also declined, resulting in funding cuts to much needed school infrastructure programmes and underfunding of the country's poorest schools.

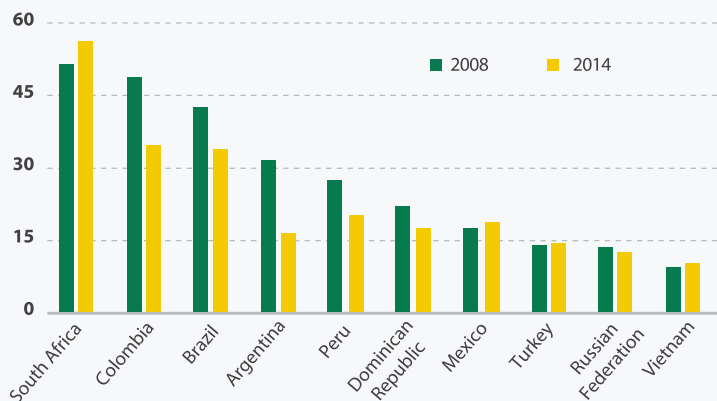
Post-apartheid South Africa provides a striking case study of the intersection between economic inequality, social exclusion and human rights deprivations

These measures do not comply with South Africa's obligations under the Covenant and in particular the non-retrogression criteria set out by the Committee, namely that such measures must be: temporary, legitimate, reasonable, necessary; proportionate; not directly nor indirectly discriminatory, according priority attention to disadvantaged groups; protective of the minimum core content of rights; and based on transparency and genuine participation of affected groups and subject to meaningful review and accountability procedures (Committee on Economic, Social and Cultural Rights, 2016). In order to negate the need for austerity, South Africa must take steps to maximize the resources available for the protection and fulfilment of human rights. This can be done by developing a more equitable tax policy that contributes to the redistribution of income and wealth and by taking meaningful steps to tackle rampant corruption and state capture. Redistribution, including wealth, is essential to expand fiscal space and enable a shift towards the people-centred rights-based development envisaged in the Constitution.

FACTSHEET No. 18

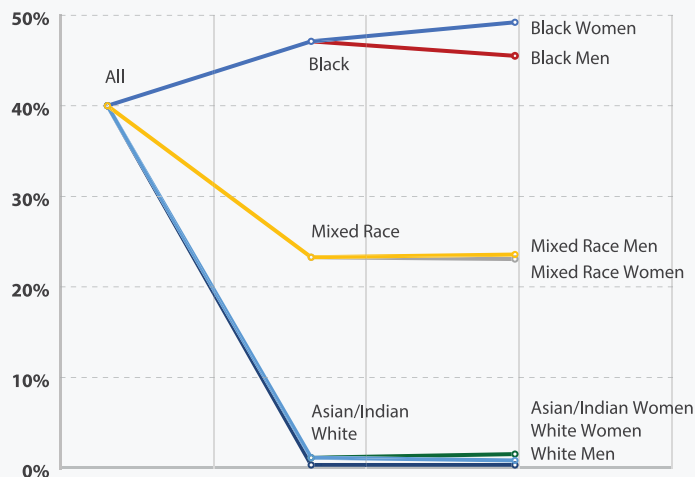
VISUALIZING
RIGHTS

FIGURE 1 Ratio of total income share of the top decile to the lowest decile, selected middle and high income countries (2008-2014)



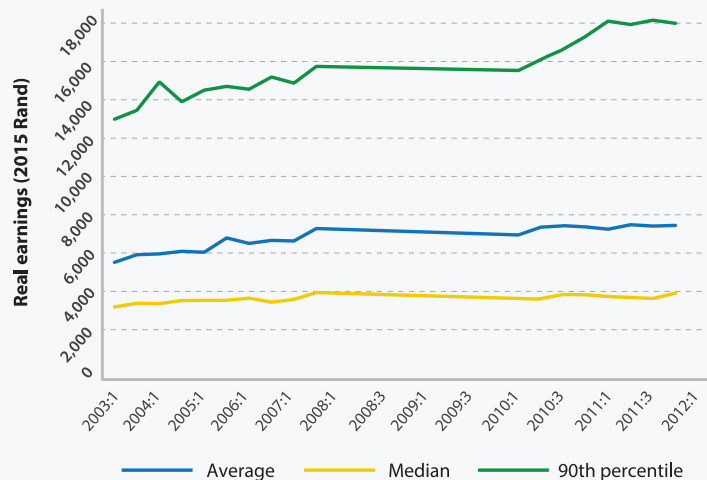
Source: World Bank, 2018a

FIGURE 2 Percentage of total population living under the poverty line by race and gender (2015)



Source: Statistics South Africa, 2017.

FIGURE 3 Wage growth across income deciles (2003 – 2012)



Source: Statistics South Africa, 2015

By a variety of yardsticks, South Africa remains the most unequal country in the world.

South Africa’s income inequality is higher than all other countries and has grown in the last decade. In 2015, South Africa’s Gini Coefficient and Palma Ratio were at 0.63 and 7.1 respectively (UNDP 2016). In 2014, two thirds of personal income was captured by the richest 10% of households. The income share of the top 1% of earners was 20%, an increase of 11 percentage points since the end of apartheid. Wealth inequality is perhaps even more staggering (Alvaredo, F et al, 2018). The wealthiest 1% of the population owns half of all assets in the country and the top decile holds 90–95% of the country’s wealth (REDI3x3, 2016). As will be shown below, quality health care and schooling remain the privilege of middle and upper classes, with poor and working class households restricted to underfunded and highly inadequate public healthcare and education.

Poverty rates have increased in recent years and are highly uneven across population groups.

In 2015, over half (55.5%) of the population lived below the official national upper bound poverty line (UBPL) of R992 per person per month (2015 prices) up from 53.2% in 2011. Approximately 2.9 million people were pushed into poverty over this period. The proportion of female-headed households living below the UBPL was 49.9% in 2015, compared to 33% for male-headed households. Racial disparities are particularly striking. For example, poverty among black African children was 73.6% in 2015, compared to 1.4% for white children. Illustrating apartheid’s legacy of spatial inequality, multi-dimensional poverty is highest in the Eastern Cape, KwaZulu-Natal, and Limpopo—provinces that had high concentrations of “homelands” (areas set aside for black Africans under the apartheid regime) where public service delivery and infrastructure were poor.

Due to slow and unequal wage growth, employment is not a guaranteed way out of poverty.

Large numbers of young people, black Africans, and women are unemployed or underemployed. In the second quarter of 2018, the expanded unemployment rate was 37%, with the youth unemployment rate at 67% (Statistics South Africa, 2018). If employed, many earn low wages that are not keeping pace with living costs. While average wages in the economy have increased, this is due to a decoupling of wage growth for higher earners from the relatively stagnant wages for the majority. South Africa’s dependency ratio (non-working age population compared to the working age population) is high, at 52% in 2015. This means low earnings must be stretched to support many household members (World Atlas, 2018). These trends result in 54% of full-time workers earning below the “working poverty line”, meaning they earn too little to keep themselves and their dependents out of poverty (Finn, 2015).



Since 2016/17, the growth of non-interest budget expenditure—essentially expenditure on social and economic programmes—has been lower than population and GDP growth.

Government expenditure per person has declined for three years in a row. Moreover, in the current year, 2018/19, the government plans to create a primary budget surplus by raising more revenue than it will spend on programmes, illustrating the prioritisation of debt reduction over social needs. As well as being much lower than population growth, the low average growth in non-interest expenditure of 0.3% over the past three years masks significant cuts and re-prioritisations that have taken place within the budget. This fiscal consolidation represents unnecessary self-imposed austerity that is compounding stagnant median wages and falling disposable incomes. Since a large share of public expenditure is geared towards lower-income groups, this is having retrogressive and discriminatory impacts, further widening inequity.

The increase in the VAT rate from 14 to 15% in April 2018 represents a clearly retrogressive austerity measure.

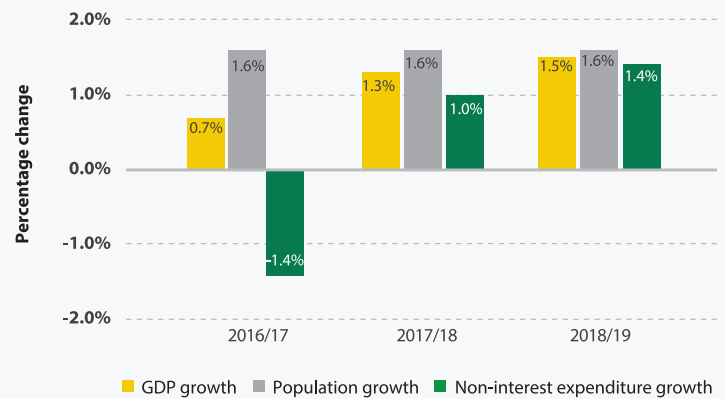
This increase is projected to raise the share of VAT in the overall tax mix from 24.6% in 2017/2018 to 26.3% in 2020/2021 (National Treasury, 2018b). And as Figure 5 demonstrates, even prior to this increase indirect taxes impacted the poorest earners the most. As expected, this VAT change increases the taxes paid by poor and low-income households, reducing their ability to afford foodstuffs and other essential goods and services necessary for rights realisation through lowering disposable incomes. Exempting certain goods from VAT (“zero-rating”) would make VAT less regressive (BJC, 2018). The VAT increase has been compounded by a large increase in the fuel levy (a tax paid on petrol and diesel). Over the last nine years these levies have increased on average by 9%-10%, outstripping increases to the most important social grants. This places additional burdens on poor and low-income households, whose transport costs are particularly onerous given South Africa’s history of apartheid spatial planning.

Exaggerated concerns about debt levels are being used to justify austerity.

In the words of the National Treasury, the 2018/19 budget “accelerates government’s efforts to narrow the budget deficit and stabilise debt (National Treasury, 2018).” However, South African debt—projected to reach 55% of GDP this fiscal year—is moderate by international standards. According to the International Monetary Fund (IMF), emerging market and middle-income country debt levels are projected to reach, on average, 57.6% in 2023, while high-income country debt averaged at 105.4% of GDP in 2017 (CSID, 2017). The idea that South Africa is facing a debt “crisis” has been fuelled by statements by international credit ratings agencies justifying their downgrades of government debt.

FIGURE 4

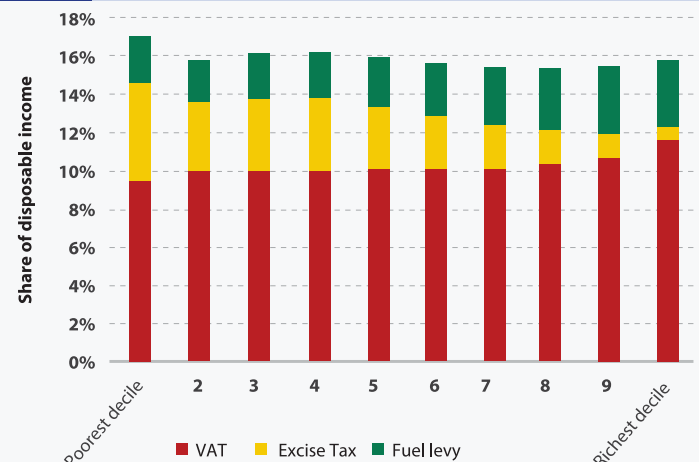
Expenditure growth, compared to GDP and population growth (2016/17 -2018/19)



Source: National Treasury, 2018a; Statistics South Africa, 2018 and own calculations.

FIGURE 5

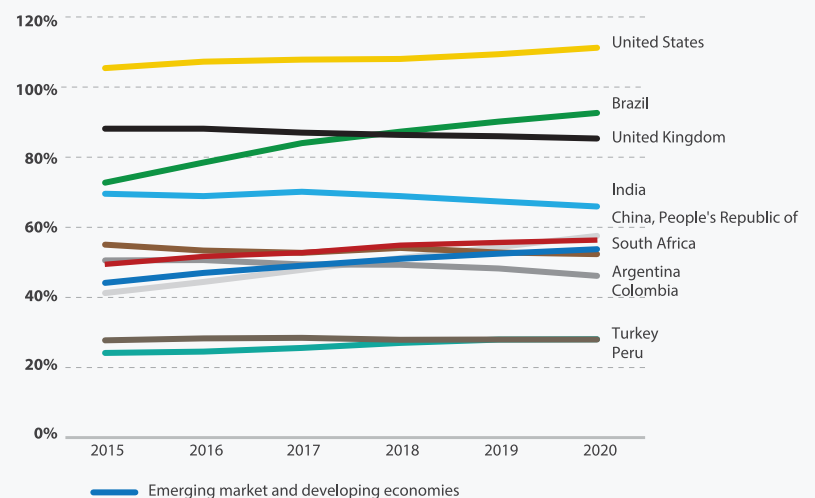
Indirect taxation as a share of disposable income, by income decile (2015)



Source: Inchauste, G et al., 2015.

FIGURE 6

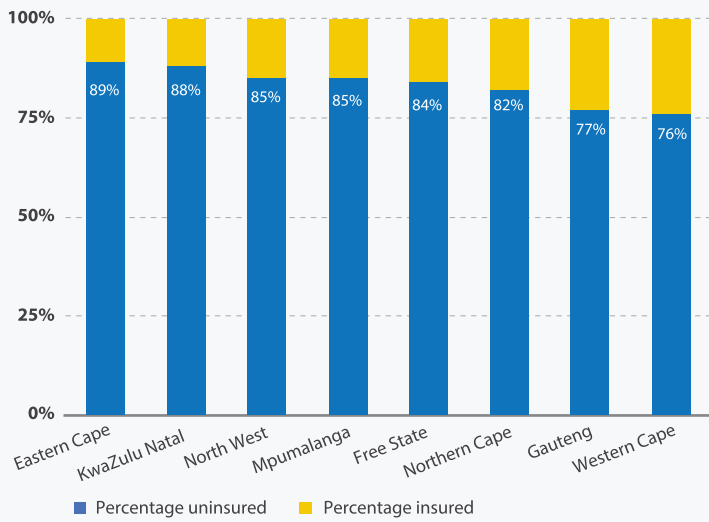
Gross government debt as a percentage of GDP, selected countries (2015 – 2020)



Source: IMF Debt Statistics, 2018

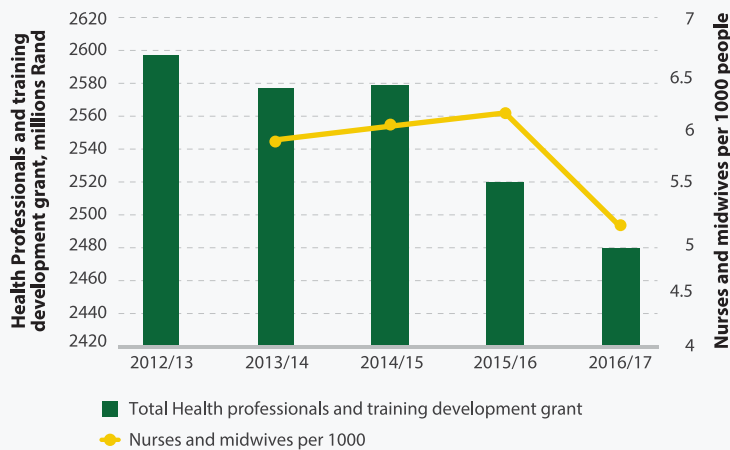


FIGURE 7 Percentage uninsured versus insured, per province (2016)



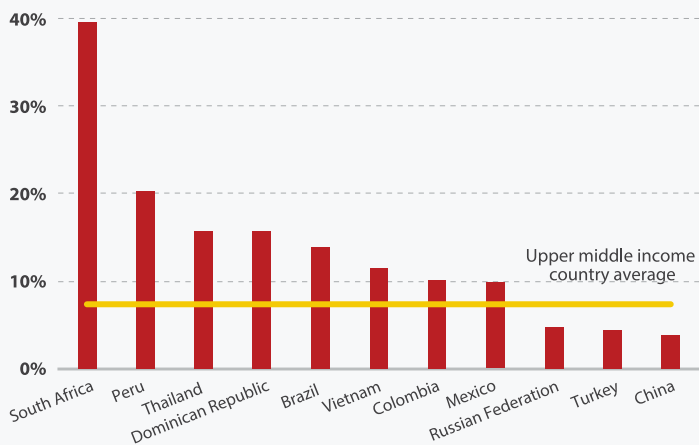
Source: Studies in Poverty and Inequality Institute, 2017

FIGURE 8 Health professional training and development allocations and nurses and midwives per 1000 people (2012/13 – 2016/17)



Source: Studies on Poverty and Inequality, 2017 and World Bank, 2018b

FIGURE 9 Percentage of deaths due to communicable, maternal, prenatal or nutritional conditions, selected countries (2016)



Source: World Bank, 2018c

Spending on health is declining in real terms, overall and per uninsured person.

National and provincial spending on health care was cut by -0.1% in real terms in 2018/19 (National Treasury, 2018c). With an estimated 740,000 additional uninsured people entering the public health system (through births and migration), health expenditure per uninsured person has decreased even more sharply. Within the health budget, R820 million was cut from the Health Facility Revitalisation Grant (which pays for upgrades and maintenance of facilities such as clinics and hospitals), while extreme pressure has been placed on departmental budgets for wages and goods and services (National Treasury, February 2018). These cuts are made in the context of an already overburdened public health system that is struggling to deal with a rising burden of disease and high medical price inflation.

Serious shortages of qualified health workers are debilitating the public health system.

In its 2019 Guidelines for Costing and Budgeting for Compensation of Employees, the Treasury states that despite “compensation baseline reductions of R10 billion in 2017/18 and R15 billion in 2018/19...No additional funding” will be available to directly fund the new 3-year public sector wage agreement (National Treasury, 2018d. pg. 60). This policy is resulting in an exodus of skilled health professionals to the private sector due to poor working conditions and unpaid benefits. Declining budgets for compensation and training are also hampering the expansion in the number and capacity of health professionals necessary to improve levels of care and prepare the country for the transition to National Health Insurance. The capacity of departments is being compromised to save on costs, which is having deleterious consequences in many government departments, resulting in shortages of funds for medicine, emergency medical services and hospital maintenance, among others.

Underfunding of public compared to private health prolongs vastly unequal access to quality health care.

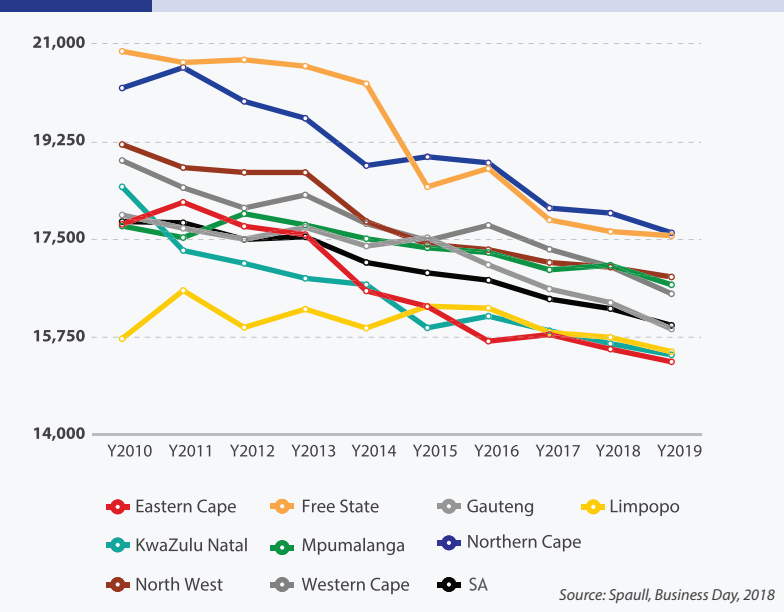
Despite serving more than five times as many people, *less money* is spent annually on public than on private health care in South Africa. For example, a third of the poorest 10% of South Africans live at least 20 kilometres away from a hospital, while this is only true of a tenth of the richest 10%. Health outcomes also diverge along these lines. For example, life expectancy in the Western Cape (a wealthier province) is over 10 years longer than in Free State (a poorer province). Inequities in health outcomes such as these are maintained by highly unequal expenditure per person on private and public health, and illustrate the need for increased investment to strengthen the public health system. In comparison to other countries with the same income levels, South Africa has by far the highest levels of deaths due to communicable, maternal, prenatal and nutritional conditions.



Spending per learner has declined in real terms over the last decade in all provinces.

Once factors such as an increase in school enrolments and above inflation increases to teacher salaries are accounted for, spending per learner across South Africa has declined by 10% since 2010. In KwaZulu-Natal, one of the poorest provinces in the country, the department of education has failed to fund schools at the minimum per-learner threshold for four years in a row (Province of KwaZulu-Natal, 2018). Funding for schools in the lowest-income communities in the province has been cut by 15% since 2015/16. The Department of Basic Education confirmed in a recent Parliamentary hearing that this story is repeated across the country.

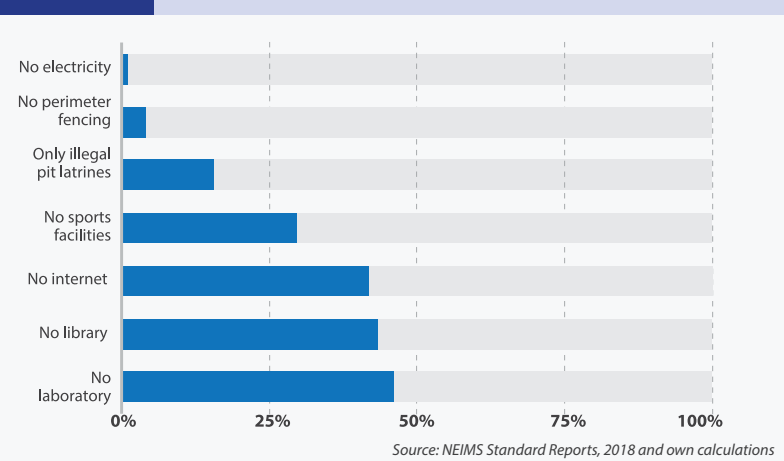
FIGURE 10 Changes in spending on basic education per learner by province (2010 – 2019)



Cuts to school infrastructure spending are leaving schools that are already ill-equipped in dire condition.

In the 2018 National Budget, the National Treasury announced that it was reducing the funding available for school infrastructure by a total of R7.2 billion over the next three years. (National Treasury, 2018f). The ongoing failure to comply with the Minimum Norms and Standards for School Infrastructure reinforces poor learning conditions and has resulted in numerous violations of other rights related to the right to education, including the rights to water and sanitation, to equality between girls and boys, and even the right to life. An example of the latter includes the deaths of Lumka Mthethwa and Michael Komape, children who in recent years have drowned in broken school pit latrines.

FIGURE 11 Percentage of schools lacking basic infrastructure (2018)



In other sectors, spending cuts affect those that are already worst off the most. These cuts are discriminatory, disproportionately impacting poor schools with infrastructure backlogs.

Under apartheid, ten times more money was allocated to white schools compared to black schools (Budlender, 2016). This created inequalities throughout the education system perhaps most visible in school infrastructure. The discriminatory reduction in spending in recent years violates minimum core obligations of the Covenant as it deprives large numbers of children of essential aspects of the right to education. For example, millions of learners, particularly in rural provinces, continue to walk several kilometres to school every day. At the same time, the average Grade 4 class size increased from 40 in 2011 to 45 in 2016, with the largest increases occurring at the poorest schools (Spaull, 2018).

FIGURE 12 Percentage of schools with illegal pit latrines vs childhood poverty rates by province (2016)

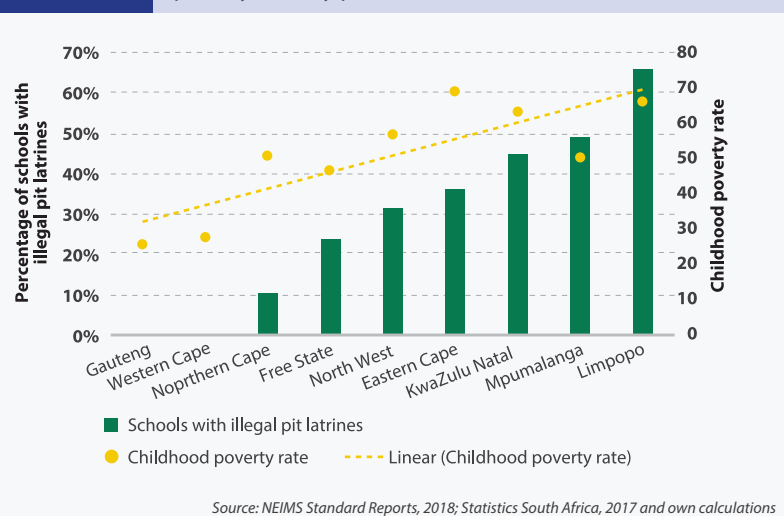
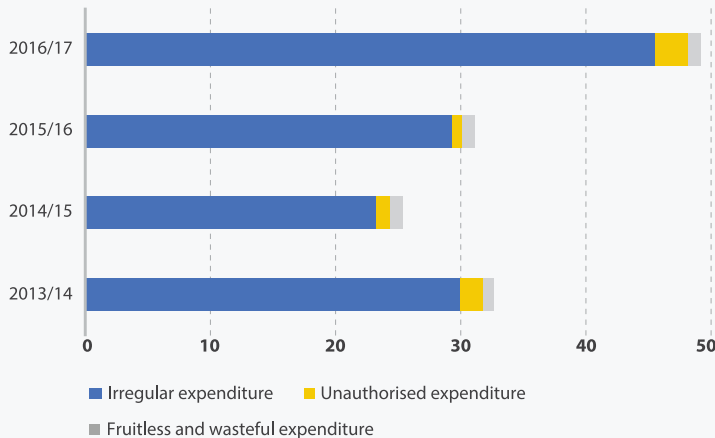


FIGURE 13

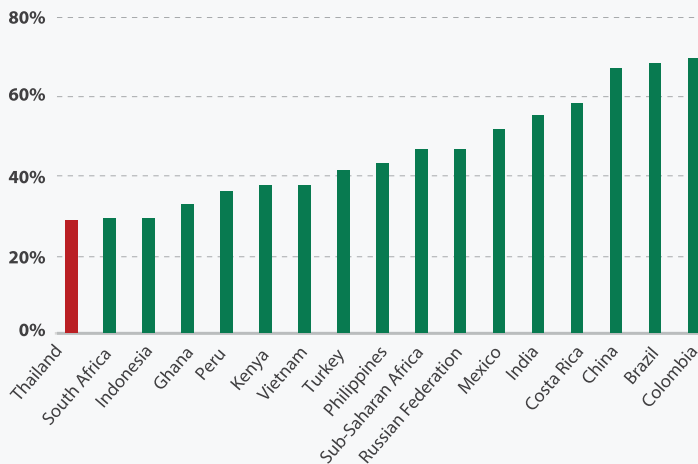
Irregular, wasteful and unauthorised expenditure, millions of Rand (2013/14 – 2016/17)



Source: Transparency International, 2018 and Auditor General of South Africa, 2017

FIGURE 14

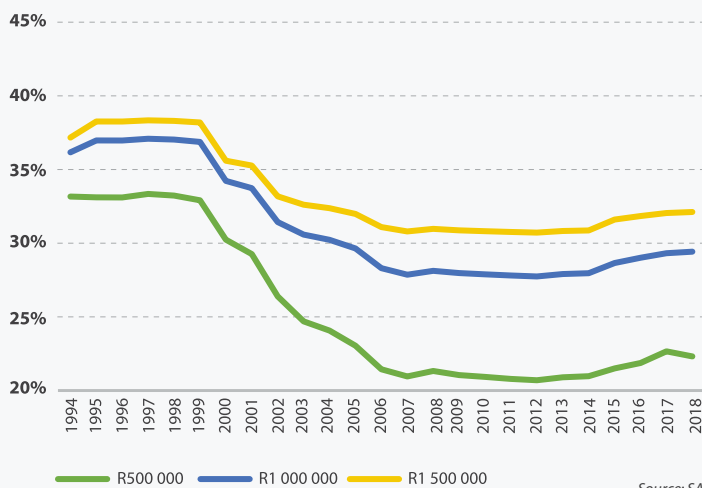
Total tax and contribution rate (% of profit) of companies in emerging markets (2017)



Source: World Bank, Doing Business 2017 Index, 2017

FIGURE 15

Effective personal income tax rates for three earning brackets (1994 – 2018)



Source: SARB, 2017

Corruption and mismanagement are leading to extreme levels of unauthorised, irregular and wasteful expenditure.

According to the Department of Economic Development, corruption costs South Africa no less than R27 billion per year. In 2017, South Africa was ranked 71 out of 180 countries in the Corruption Perception Index (CPI), putting it below neighbours such as Namibia and Botswana. Public procurement has been grossly abused with the government having been described as “a massive, tender-generating machine,” with its core functions almost completely outsourced. Procurement has become increasingly politicized, leading to illegal rent-seeking that undermines the ability of South Africa’s public administration to deliver the services that are essential for the realisation of Constitutional rights. Public sector corruption is impossible without corruption in the private sector. The consolidation of political power among a network of economic elites, commonly referred to as “state capture,” has allowed for the “repurposing” of state institutions to become vehicles of enrichment rather than service delivery (Public Affairs Research Institute, 2017 and Office of the Inspector General, 2016).

Total tax and contribution rates of companies in South Africa are low compared to peer countries.

South Africa has maintained a tax-to-GDP ratio of around 25% over the last decade. By international standards this is above average. But, given the scale of socioeconomic challenges and extreme levels of inequality, the tax mix must be evaluated holistically and on a more granular level. The R48.2 billion shortfall in the 2018/19 National Budget illustrates that current revenue raising approaches are unable to generate the necessary tax income (National Treasury, 2018b). Corporate tax is notably low. South Africa ranks 172 out of 213 countries, where 1 has the highest company tax and 213 the lowest. The corporate income tax rate was 50% in 1990 and is only 28% today. Further, tax evasion is estimated to have cost a staggering R1.6 trillion between 2005 and 2014 (Global Financial Integrity, 2017). Corporate tax is notably low, as indicated by the tax and contribution rate. This is defined as the taxes and mandatory contributions that a medium-size company must pay or withhold in a given year. It also measures the administrative burden in paying taxes and contributions.

Failure to generate sufficient resources results from long-term regressive changes to the tax mix.

On the whole, more progressive forms of taxation, such as personal and corporate income taxes have either stayed the same or decreased as part of the overall tax mix. Personal income tax rates have plunged since 1999. This has limited revenue collections at a time when social spending is desperately needed. Capital gains tax is also comparatively low. In 2016/17 it raised only R17 billion, a mere 1.5% of tax revenue. Because not all capital gains are taxed, in 2017, individuals only paid a rate of 16% on capital gains, and companies 22% (South African Revenue Services, 2018). This is below the OECD and BRICS norm. Tax on inheritance—estate duty—is levied at only 20% and raises revenue worth 0.05% of GDP compared with the OECD average of 0.2% (SACTWU and COSATU, 2017). South Africa also has no annual “net wealth tax” that would tax the total value of wealth held in a given year. International evidence indicates that raising revenue through progressive taxation on personal and corporate income, property and wealth, while ensuring levels of social spending that universalize access to health, education and other essential public goods and services, can spur growth and reduce inequality, furthering rights enjoyment.



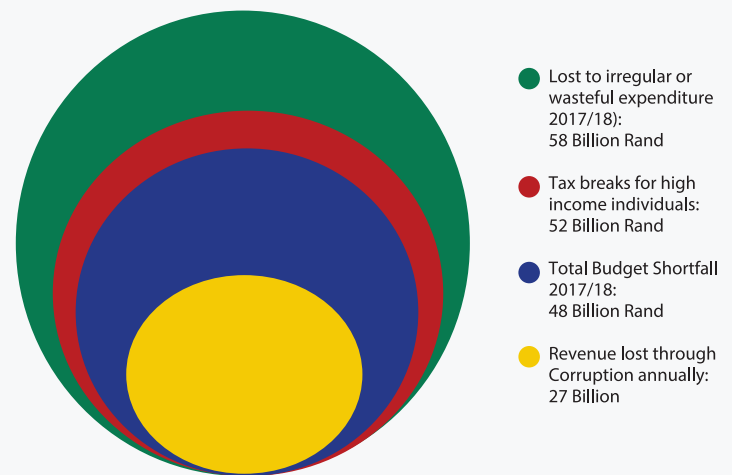
Viable alternatives to austerity exist.

Civil society research shows great scope to maximize available resources, improve equity and negate the need for austerity measures:

- R27 billion is estimated to be lost each year through corruption (BusinessTech, 2017).
- R52 billion was spent in tax breaks for high income earners in 2015/16 (mostly on private medical care and private pensions) (National Treasury, 2018a).
- R27 billion could be raised by increasing the top two personal income tax rates from 26% and 37% to 28% and 40% respectively (Budget Justice Coalition, 2018).
- R33 billion could be raised by increasing the corporate income tax rate to 32% (Budget Justice Coalition, 2018).
- R12 billion could be raised through a national property tax of 0.5% on residential property above R1 million (Budget Justice Coalition, 2018).
- R65 billion could be raised by an annual net wealth tax of 1% (SACTWU and COSATU, 2017).

Other potential sources of funds for a fiscal stimulus package also exist. For example, the Public Investment Corporation is over capitalised. In addition, given South Africa's only moderate levels of debt, allowing debt-to-GDP to peak at 60% would allow for another approximately R250 billion in borrowing.

FIGURE 16 Alternatives to expand fiscal space



Source: Transparency International, 2018; Auditor General of South Africa, 2017; National Treasury, 2018b.

RECOMMENDATIONS

1. The State should take immediate action to end fiscal austerity measures which contravene its obligations under the Covenant, and intensify its efforts to combat poverty and address inequalities. As a part of these efforts the State should ensure real per capita annual increases in expenditure in areas of importance to economic and social rights. The State should also adopt a sustainable approach to debt financing that contributes to protecting rights. Assessments of the impact of previous and existing budget cuts, particularly on marginalised groups, must be undertaken and steps adopted to mitigate and remedy those impacts which have resulted in the deprivation of economic, social and cultural rights.
2. The State should adopt a human rights-based approach to fiscal and economic policy, and in particular, review its tax regime in order to increase revenue in the most equitable manner possible. The State should incorporate human rights impacts assessments into its budget-making processes, including the development of tax and fiscal policy. The State should consider all possible alternatives at its disposal to raise and allocate the maximum of available and potential resources for the realisation of economic, social and cultural rights.
3. The State should further increase its efforts to stamp out corruption. It should strengthen regulatory and investigative mechanisms to protect against any adverse human rights impact arising from acts of corruption involving the private sector, with a view to holding perpetrators to account and recovering illicit assets. The State should ensure adequate funding and staffing of anti-corruption institutions like the Public Protector, the SARS Special Investigating Unit, and the Directorate for Priority Crime Investigation (DPCI).
4. The State should take budgetary measures to improve the availability, accessibility and quality of public health care and address disparities between groups. The State should increase consolidated budget allocations for health in line with the funding requirements of the transition to universal health care, notably the target to double public health care expenditure by 2025. The State should replace arbitrary wage expenditure ceilings with a long-term human resources health strategy and ensure that funds are made available to educate and train the additional health personnel that are necessary to meet it.
5. The State should take budgetary measures to improve the availability, accessibility and quality of public education and address disparities between groups. The State should immediately ensure that all schools are funded at minimum per learner thresholds established by the National Norms and Standards for School Funding. The State should reverse cuts to conditional grants for school.

REFERENCES

- Alvaredo, F et al, 2018. World Inequality Report, 2018 at <https://bit.ly/2N5WNzG>.
- Auditor General of South Africa, 2017. Consolidated General Report on National and Provincial Audit Outcomes 2016/17.
- BusinessTech, 2017. "Corruption costs SA GDP at least R27 billion annually, and 76 000 jobs," BusinessTech, September 1, 2017.
- Budlender G, 2016. "Whites should admit they gained from a monstrous system," GroundUp, May 19, 2016.
- BJC, Submission by Budget Justice Coalition with respect to the current list of zero-rated items, and mitigating the impact of the increase in the VAT rate on poor and low-income households, June 2018.
- Committee on Economic, Social and Cultural Rights, 2016. "Public debt, austerity measures and the International Covenant on Economic, Social and Cultural Rights," Statement by the Committee.
- CSID, 2017. "Mitigating the Impact of South Africa's Debt Downgrades: International Experiences."
- Finn, Arden, 2015. "A National Minimum Wage in the Context of the South Africa Labour Market," Working Paper Series, National Minimum Wage Research Initiative (University of the Witwatersrand).
- Global Financial Integrity, 2017. "Illicit Financial Flows to and from Developing Countries: 2005-2014," pg. 35.
- Inchauste, G et al., 2015. "The Distributional Impact of Fiscal Policy in South Africa," World Bank Group Policy Research working paper.
- National Treasury of the Republic of South Africa, 2018a. "Budget Review," Tables 1.2, 3.2 and 4.2.
- National Treasury of the Republic of South Africa, 2018b.
- National Treasury of the Republic of South Africa, February 2018c. "Budget Review," Table 8, and own calculations.
- National Treasury of the Republic of South Africa, 2018d. "Guidelines for Costing and Budgeting for Compensation of Employees," at <https://bit.ly/2ynxnY8>, guidelines 1.1. and 3.1.
- National Treasury of the Republic of South Africa, 2018f. "Budget Review," pg. 25.
- NEIMS Standard Reports, January 2018.
- Office of the Public Protector, 2016. "The State of Capture: a report of the Public Protector".
- Province of KwaZulu-Natal, 2018. 2018 Estimates of Provincial Revenue and Expenditure (EPRE), KwaZulu-Natal, Vote 5 Education, pg. 199.
- Public Affairs Research Institute, 2017. "Betrayal of the Promise: how South Africa is being stolen".
- REDI3x3, 2016. "Wealth inequality on South Africa: Evidence from survey and tax data."
- SACTWU and COSATU, 2017. "Submission to the Davis Tax Committee on Possible Wealth Taxation in South Africa."
- SARB, 2017. Tax Chronology of South Africa 1979-2016.
- South African Revenue Service, 2018. "Capital Gains Tax (CGT)" at <https://bit.ly/2NiodyK>.
- Spaull, N, 2018. "Basic education thrown under the bus and it shows up in test results," and Statistics South Africa, 2018. "2018 Mid-Year Population Estimates".
- SPII, 2017. Monitoring the Right to Access to Healthcare in South Africa, Working Paper 17.
- SPII, 2015. Realising the Right to Basic Education in South Africa, Working Paper 10.
- Statistics South Africa, 2018. Quarterly Labour Force Survey, 2nd Quarter 2018. July 2018, P0211.
- Transparency International, 2018. "Corruption Perceptions Index 2017.
- United Nations Development Programme, 2016. 2016 Human Development Reports - Table 3 Inequality Adjusted Human Development Index.
- World Data Atlas, 2018. South Africa—Ratio of population aged 0-14 and 65+ per 100 population 15-64 years at <https://bit.ly/2C5Hx1r>
- World Bank, 2017. Doing Business 2017 Index—Tax contributions and rate as a percentage of GDP.
- World Bank, 2018a. World Development Indicators—Ratio of total income share of the top quintile to the lowest quintile.
- World Bank, 2018b. World Development Indicators— Nurses and midwives per 1000 people.
- World Bank, 2018c. World Development Indicators— Percentages of deaths due to communicable, maternal, prenatal or nutritional conditions, selected countries.

About This Factsheet Series

This series is intended to contribute to the ongoing work of UN and other intergovernmental human rights mechanisms to monitor governments' compliance with their economic, social and cultural rights obligations. It is also intended to contribute to strengthening the monitoring and advocacy capabilities of national and international civil society organizations. Drawing on the latest available socioeconomic data, the country factsheets display, analyse and interpret selected quantitative indicators in light of key dimensions of governments' economic and social rights obligations. The factsheets are not meant to give a comprehensive picture, nor provide conclusive evidence, of a country's compliance with these obligations. Rather, they flag some possible concerns which arise when statistics are analysed and visualized graphically in light of international human rights standards.

About the organizations:

About the organizations:
www.cesr.org
www.instituteforeconomicjustice.org
www.section27.org.za
www.spil.org.za

Contact

CESR
86 Chambers Street, Suite 704, New York, NY, USA
10007
Tel: +1 (718) 237-9145
Fax: +1 (718) 237-9147
www.cesr.org
info@cesr.org
Twitter: @social_rights
Facebook: @CenterEconomicSocialRights

IEJ
University of the Witwatersrand, Johannesburg
Gilad.Isaacs@wits.ac.za
Twitter: @IEJ_SA

+SECTION27
87 De Korte Street,
Braamfontein, Johannesburg 2017
Tel: +27 11 356 4100
www.section27.org.za
info@section27.org.za
Twitter: @SECTION27news
Facebook: @SECTION27news

SPII
PO. Box 31747
Braamfontein
Johannesburg
South Africa
2017
Tel: +27 (0) 11 833 0161/2
Fax: +27 (0) 11 832 3085
www.spil.org.za
advocacy@spil.org.za

Acknowledgments

This factsheet is based on a collective report submitted to the Committee on Economic, Social and Cultural Rights by CESR, IEJ and Section 27 on the occasion of the 1st periodic review of South Africa at the 64th period of sessions of the Committee. The collective report is available at www.cesr.org. Additionally, the Studies on Poverty and Inequality Institute contributed background research and data visualisations to this factsheet.

©2018 Creative Commons License. Center for Economic and Social Rights, Institute for Economic Justice, Section 27 and Studies on Poverty and Inequality Institute.

